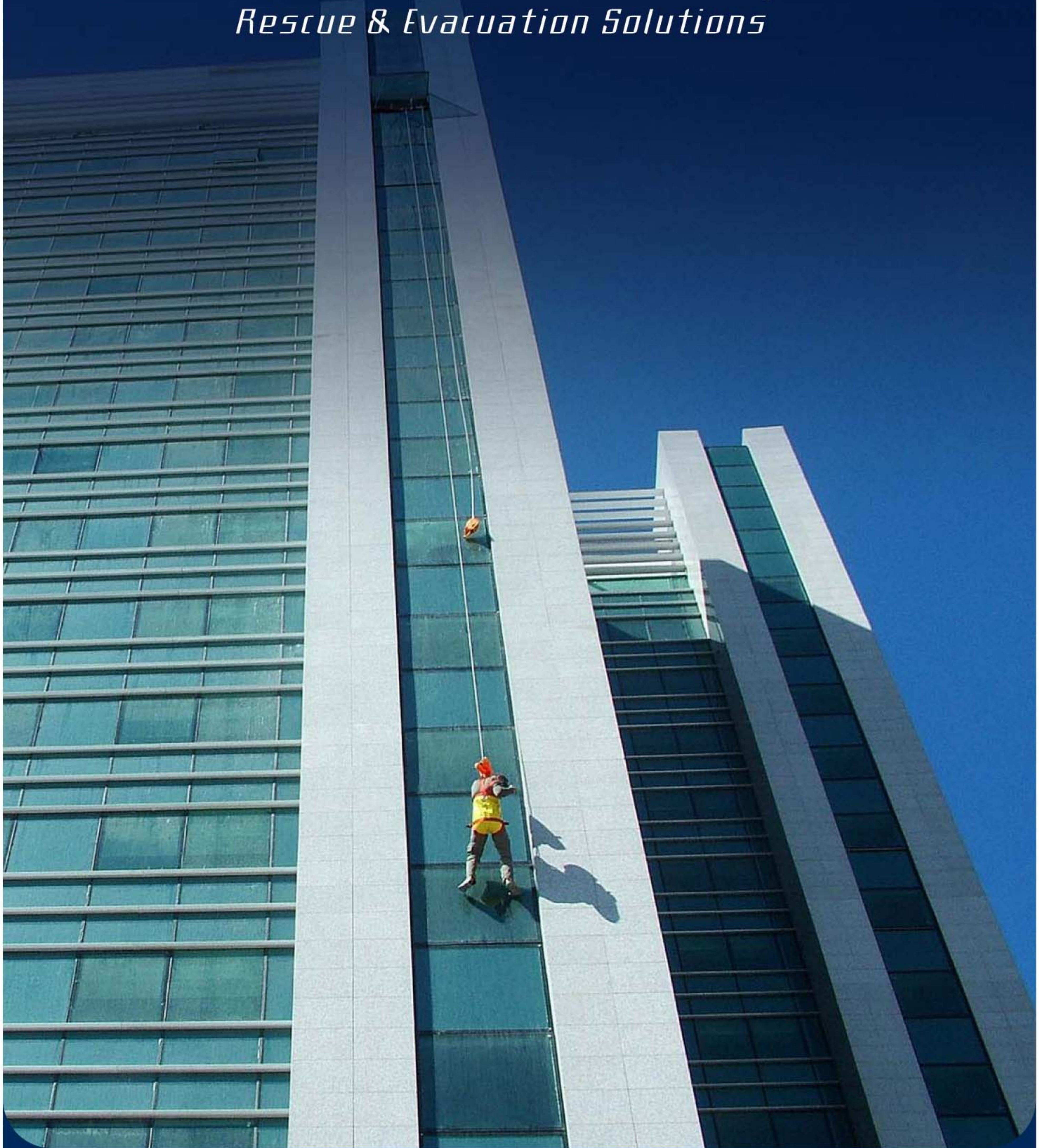


DoubleExit

Rescue & Evacuation Solutions



DoubleExit Escape System

- is a groundbreaking product.
- It provides revolutionary escape and evacuation solutions from buildings, which will save lives during emergencies when existing means of escape are either inaccessible or un-operational. It is the only escape system in the world that is installed:
- Independently inside a storage cabinet.
- Inside a front door and protected by a worldwide patent.



DoubleExit - Building Emergency Escape System

The number of people residing or working in multi-storey buildings has been steadily rising for many years. However, the emergency exits and escape routes of these buildings are outdated and do not provide a reasonable solution for emergencies such as fires, terror attacks and earthquakes.

As a direct result of in depth research on disasters all over the world and a profound understanding that the current situation is in desperate need of change, various multi-storey building evacuation methods have been developed, such as: escape and evacuation chutes, heliports, floating platforms and more.

Unfortunately, these methods only provide partial solutions. This, in turn, burdens the rescue services responsible for evacuating buildings and saving lives during emergencies. The development of **DoubleExit Escape System** changed this reality. **DoubleExit Escape System** enables evacuation from any situation in all types of emergencies without additional assistance. Crucial features include:

- **Operational at all times – readily available and accessible**
- **Easy, simple and safe operation – does not require any prior experience**
- **Does not rely on any external power source**
- **Continuous and multiple use ensuring a large number of people can be evacuated**
- **Choose the safest and most accessible escape route**
- **Reliable and safe**

Flexible solutions for any disaster

DoubleExit Escape System is permanently fixed to the building enabling evacuation from any safe and accessible point, determined by the user's discretion.

Simple operation

DoubleExit Escape System is mechanically operated and does not rely on any external power source. The evacuation process can be undertaken independently without acquiring specific skills or receiving professional assistance. The system can operate up to 150 meters / 492 feet high with loads ranging from 30 to 150 kg / 66 to 330 pound and a controlled descent rate of about 1 meter per second / 3.3 feet per second, in total safety.



Continuous operation

DoubleExit Escape System is bidirectional, which enables the immediate and continuous evacuation of a large number of people before the emergency situation spirals out of control.

Flexible Installation

DoubleExit Escape System is operational up to a height of 150 meters / 492 feet and can be installed in apartments, offices or any other location without structural alterations or changes to the interior design. **DoubleExit Escape System** is modified in accordance with a specialist's recommendations and the specific needs of the client. The system can be installed in both new and existing buildings. Specially trained professionals will carry out every part of the process, from the initial onsite inspection up until the actual installation.

Safety

DoubleExit Escape System is capable of withstanding sudden, constant and irregular strains and loads that may arise from different emergency situations. The system is equipped with breaking and energy absorbent mechanisms as well as friction control. The escape cable is a strong compound that was developed especially for this purpose.

Reliability

Each **DoubleExit Escape System** is tested during and after production. This stringent quality control and testing process was developed especially for **DoubleExit**. The process has received widespread recognition from worldwide safety standards authorities. The quality control process guarantees maximum reliability.



DoubleExit - We Save Lives

FAQs

Q: Is it possible that more than one person will be evacuated simultaneously from the same evacuation site?

A: Yes. Two adults or an adult and a child or two children could be evacuated simultaneously by the same system and if there is more than single system at the same apartment, evacuation process could work in parallel.

Q: Can the invalids, unconscious or children use DE system?

A: Yes. Children will be assisted by adult as well as the invalid. If the invalid could mobile him self and wear the evacuation harness, he could be evacuated using no assistance.

Q: Is it vital for the user to try out at least one descent exercise?

A: Early experience is optional and not mandatory. We shall recommend buyers to visit training center and experience the operation of the system in order to gain confidence and "peace of mind" that it is dependable.

Q: What is the frequency of periodical inspections of the system?

A: This system has a standard mark. The system is inspected once a year by an authorized technician. The approval is valid for a year, whereupon the next inspection is to be performed.



DoubleExit

Rescue & Evacuation Solutions

Company profile

DoubleExit Rescue and Evacuation Solutions was founded in 2003 by Israeli entrepreneurs, Mr. Raffi Salhov and Mr. Yoav Barzilay, to develop and manufacture safe and innovative evacuation systems that will provide solutions in times of emergencies. A deep understanding and in depth analysis of emergency situations are an essential part of the company's development process. The DoubleExit team is committed to excellence, supplying totally effective and reliable products.

The company's products recognized and certificated by the following standards authorities:

- Standards Institute of Israel (SII)
- TUV Germany
- POZT Russia
- GRAVITEC USA following the new ASTM standard E 2484 - 06



ASTM E-2484 STANDARD

Mission

- To increase awareness of the need for satisfactory escape and rescue solutions
- To develop advanced products that will provide comprehensive escape and rescue solutions
- To be the foremost company in the industry, nationwide and internationally